

# iJIG-Plus Quick Step Records

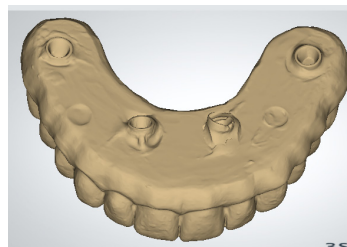
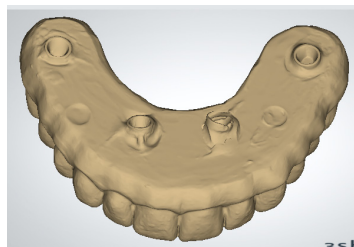
Please follow the instructions below. Double arch means both arches are full-arch prosthetics on MUA abutments and both arches are to be restored. Single arch means only one arch is to be restored. Contact ROE with any questions on the records or the process.



## Double Arch

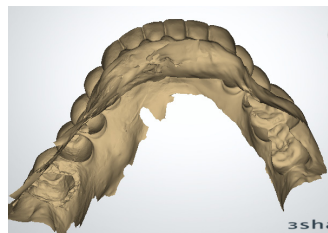
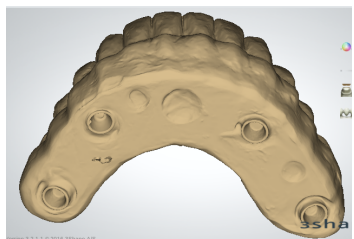
Scan implant prosthetic outside mouth

- o All areas including abutments

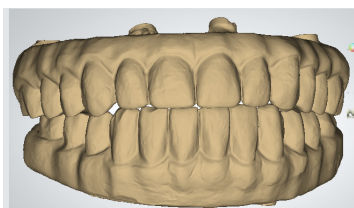


Scan opposing implant prosthetic outside mouth

- o All areas including abutments



Screw down both appliance in the mouth and scan the bite.



## Single Arch

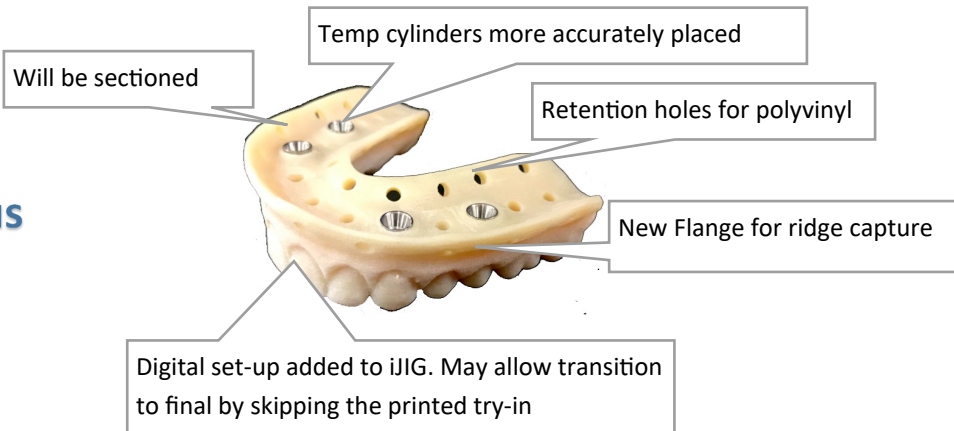
Scan implant prosthetic outside mouth

- o All areas including abutments

Scan opposing teeth and some tissue

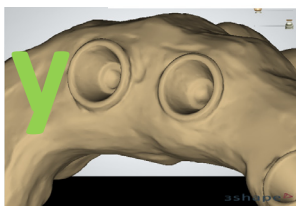
Scan Bite registration

## New Improved iJIG-Plus

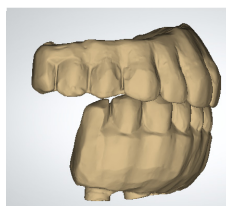


## Important iJIG-Plus Records

Cylinder scan must be perfect.



Can add distal extensions



Must send photos

