

IJIG – INSTRUCTIONS



ROE's Proprietary Transfer Appliance

Purpose: Fabricating a new Full Arch Restoration from an Existing Full Arch Restoration (must be on multi-unit abutments)

With ROE's technology, doctors can simply scan an existing appliance, upload to ROE, and receive an iJIG, sectioned, relieved and ready for luting and pick up. There is no other system on the market that makes it this simple to order a new full arch restoration.

SIMPLE STEPS

Step 1: Ensure the prosthetic is on MUA (multi-unit abutments)

Step 2: Unseat the appliance, scan all the surfaces with a digital impression scanner (All surfaces)

Step 3: Upload this scan only. Must tell ROE the implant brand and size. We do not need the opposing or bite at this time

Step 4: Receive the iJIG complete with instructions (located to the right). Add tray adhesive to the tissue side of each section. Screw down each section using the clear transfer holder. Ensure all sections are fully seated. Rotate each section until the arch form looks correct. Lute all sections with the provided material. Flow medium or heavy body polyvinyl impression material between the iJIG and the tissue. Equilibrate, capture a bite, opposing, photos if needed, and make marks on the iJIG where changes are to be made.

Step 5: Complete the ROE Fixed Full Arch Work Authorization and return to ROE. Must indicate how you would like interaction of the final with the ridge: Hygienic design with ridge contact / high water design / other please explain.

Step 6a: If you would like a digital reset and try-in, please order in Step 5. We will send you a new Printed Try-In for final approval.

Step 6b: If exiting prosthetic was accepted, use the iJIG as a method to transfer all the records to ROE (steps 1 – 5) and ROE will fabricate the final restoration.

Step 7: Seat final restoration:

\$2850 TLZ-IB (Prettau-Type), NanoTi or NanoTrinia (Nano-Ceramic on Ti or Trinia bar)

Contact ROE Dental Laboratory
7165 E. Pleasant Valley Rd
Independence, OH 44131
800 228 6663
info@roedentallab.com

IJIG FLOW

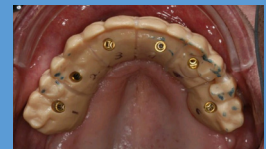
Scan Existing Appl



Receive iJIG



Seat, lute, impress



Try-In Prototype



Final

