

iJIG - ROE's proprietary full arch transfer service

Purpose of iJIG: To fabricate a prototype or new full arch restoration from an existing full arch restoration (must be on multi-unit abutments). With ROE's technology, doctors can simply capture a digital impression, upload to ROE, and receive an iJIG, sectioned, relieved and ready for luting and pick up.

Records for iJIG

1. Extra-oral scan of existing prosthetic with ROE's iJIG Scan Analogs (\$20 each)
2. Intra-oral scan of opposing arch and bite registration using existing prosthesis
3. Intra-oral scan of the arch – tissue and MUA's (may need to send as second patient name)
4. Photograph of full face / full smile if esthetic changes needed – info@roedentallab.com
5. Provide exact implant brand, system, and platform of each site.

Simple Steps

Step 1: Ensure the prosthetic is seated on MUAs (multi-unit abutments). **If you are restoring Zimmer, Implant Direct, MIS, Camlog, must use original company OEM MUA model analogs to scan.**

Step 2: Capture

- a. Capture full face full smile photographs (close up full smile if photographs are dark).
- b. Unscrew and remove the appliance from the mouth.
- c. Scan the arch being restored to capture the MUA heads and tissue. Send to ROE.
- d. Then, screw down ROE iJIG analogs to each site on the restoration, outside the mouth.
- e. Scan the arch with MUA's as a first patient scan. Scan all the surfaces of the prosthetic, including the intaglio surface, and then reseal. Scan opposing arch and bite.

Step 2: Upload

- a. Upload the case via ROE's web site, or submit via your digital impression portal.
- b. Order an iJIG - provide the implant brand and size for each implant.

Step 2: iJIG Seating

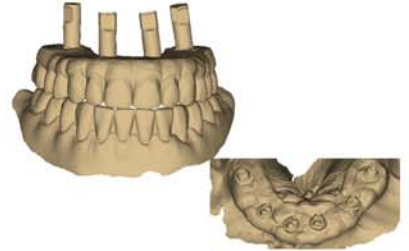
- a. Add tray adhesive to the tissue side of each section. Screw down each section using the clear, suckdown transfer holder. Ensure all sections are fully seated and passive - capture an X-Ray to confirm! Adjust if needed to passivity.
- b. Lute all sections with GS Pattern Resin, Quick-Up, Stellar, Duralay.
- c. Equilibrate, capture a bite, opposing cast, photos, and make marks on the iJIG where esthetic changes are to be made.
- d. Flow medium or heavy body polyvinyl impression material between the iJIG and the tissue if there are gaps that need filled. Ship to ROE.

Step 2: Order Printed Try-In

Complete ROE Fixed Full Arch Work Authorization and return to ROE. Request a Printed Try-In. This is ROE's final prototype that is intended for clinical try-in and equilibration.

iJIG Flow

1. Digital Scan (Tissue / MUA scan)



Doctor receives iJIG



2. Seat, lute, reline impression



3. Printed Try-In



Seat final



Full face full smile photo

